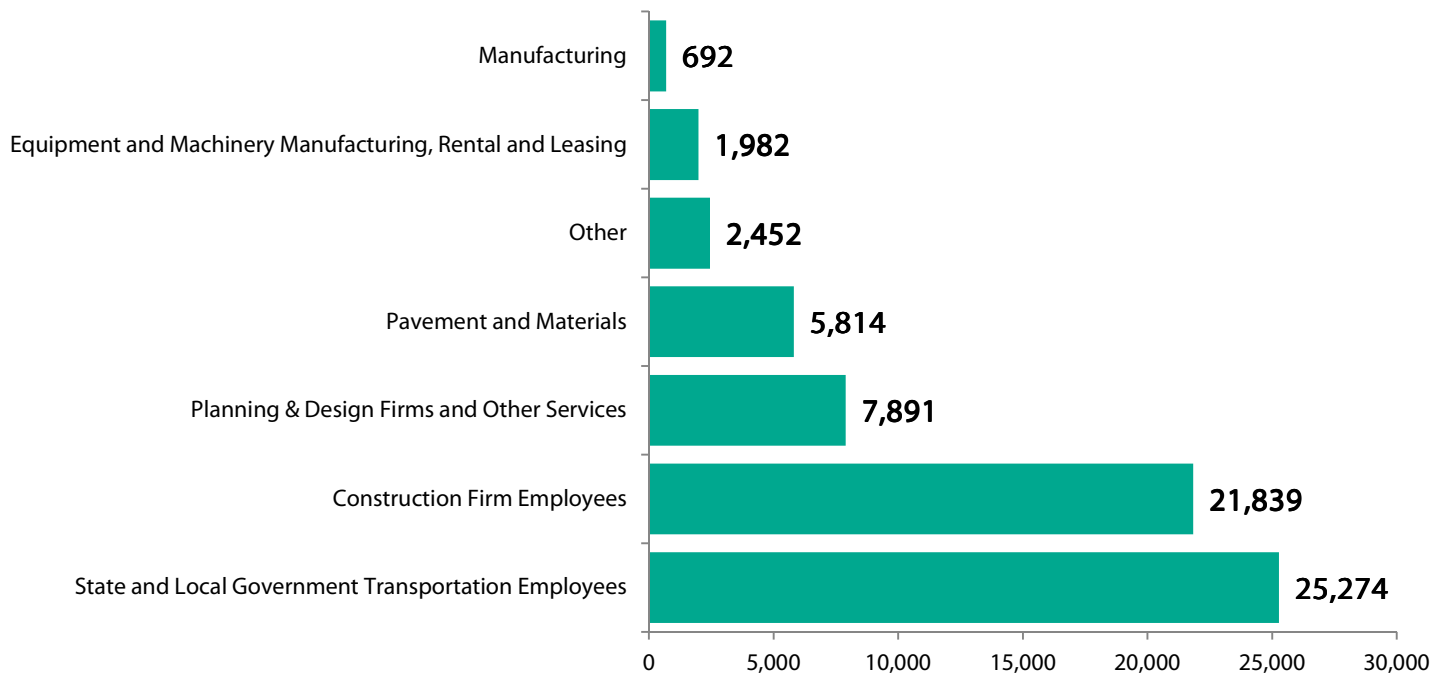


OHIO TRANSPORTATION FACTS—ECONOMIC IMPACTS

- The design, construction and maintenance of transportation infrastructure in Ohio supports the equivalent of 132,374 full-time jobs across all sectors of the state economy. These workers earn \$5.5 billion annually.
- This includes the equivalent of 65,944 full-time jobs directly involved in transportation infrastructure construction and related activities. Spending by employees and companies in the transportation design and construction industry support an additional 66,430 full-time jobs.
- Transportation construction contributes an estimated \$1.0 billion in state and local income, corporate and unemployment insurance taxes and the federal payroll tax.
- 2,447,495 full-time jobs in Ohio in key industries like tourism, retail sales, agriculture and manufacturing are completely dependent on the state’s transportation infrastructure network. These workers earn \$95.0 billion in wages and contribute an estimated \$17.3 billion in state and local income, corporate and unemployment insurance taxes and the federal payroll tax.

Ohio Direct Employment Supported by Transportation Construction Market Activity, by Industry



OHIO TRANSPORTATION FACTS—SCOPE & CONDITION

The Ohio transportation network includes highways, local roads and streets, bridges, airports, transit and rail, freight railroad and ports and waterways. Together, these facilities move Ohio travelers, businesses and freight and drive economic growth.

- Ohio has 123,297 miles of roadway.
- Of the state's 29,377 miles of roadway eligible for federal aid, 6.6 percent are rated “not acceptable” and need major repairs or replacement.
- Ohio has 26,986 bridges. FHWA reports 24 percent of the state’s bridges are either “structurally deficient” (2,080 bridges) or “functionally obsolete” (4,452 bridges).
- It will cost an estimated \$6.7 billion to make needed bridge repairs on 1,463 structures in the state.
- There are 30 transit agencies based in the state that serve Ohio travelers.
- There are 35 freight railroads operating 5,338 miles of track.
- Ohio has 453 commercial and general aviation facilities with 766 runways. A total of 70 percent of the runways that are rated are classified in good or excellent condition.
- Waterway facilities in Ohio include 4 locks and dams and 377 port docks, among other facilities. Ohio has 440 miles of inland waterways and ships 90.6 million tons of freight.

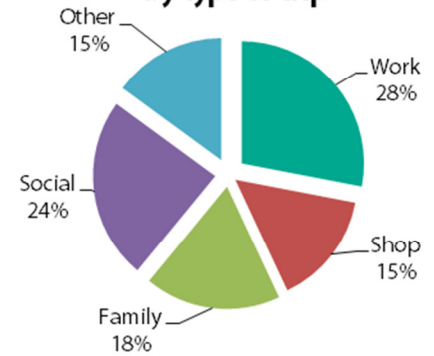
Transportation Network Profile	
Highways, Roads & Bridges	
Total Road Mileage	123,297
Rural Mileage	75,775
Urban Mileage	47,522
Number of Bridges	26,986
Airports	
Number of Airports	453
Transit & Rail	
Bus Route Miles	8,205
Transit Rail Route Miles	68
Number of Transit Agencies	30
Freight Railroad	
Railroad Miles	5,338
Number of Railroads	35
Ports & Waterways	
Miles of inland waterways	440
Total Shipments (1,000 tons)	90,569
Domestic Shipments	68,303
Foreign Shipments	11,446
Intrastate Shipments	10,820
Number of waterway facilities	491

OHIO TRANSPORTATION FACTS—MOBILITY

A strong transportation network is crucial for facilitating economic and recreational activity across Ohio. The businesses and workers in Ohio rely on the state’s transportation network to arrive at their offices, sales visits and job sites safely each and every day.

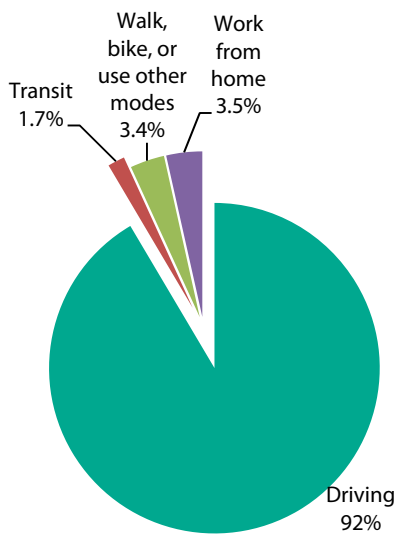
- Ohio drivers traveled 113 billion vehicle miles in 2013, with the average driver traveling 14,042 miles, compared to a national average of 14,085 miles.
- Most travel, 28 percent of all miles, was for commuting and work-related purposes.
- In Ohio, 92 percent of commuters get to work by driving, 1.7 percent take transit, 3.4 percent walk, bike or use other modes and 3.5 percent work from home.
- The average commute time is 22 minutes one way.
- The state’s transportation network allows Ohio citizens to make choices about where they work and live—70 percent of residents work and live in the same county (commuting an average of 17 minutes one way), 27 percent commute to a different county to work (33 minute average commute), and 2.8 percent work in a different state (38 minute average commute).
- Over the last five years, an average of 1,657,916 people have moved either within or to Ohio each year, with 65 percent relocating within the county where they were living before, 22 percent moving from a different Ohio county, 11 percent coming from out of state and 2.4 percent coming from abroad.

Miles traveled by U.S. drivers, by type of trip



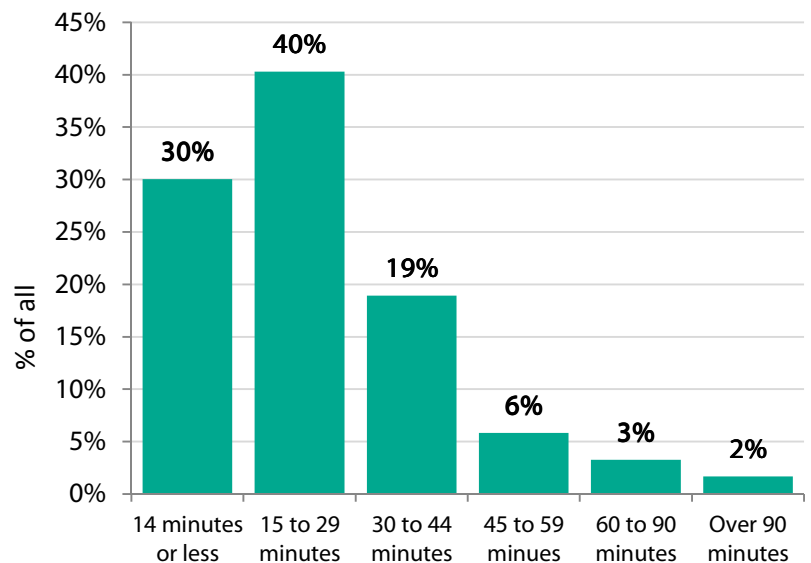
Source: National Personal Transportation Survey

How Ohio drivers get to work



Source: American Community Survey

Ohio daily one-way commuting times

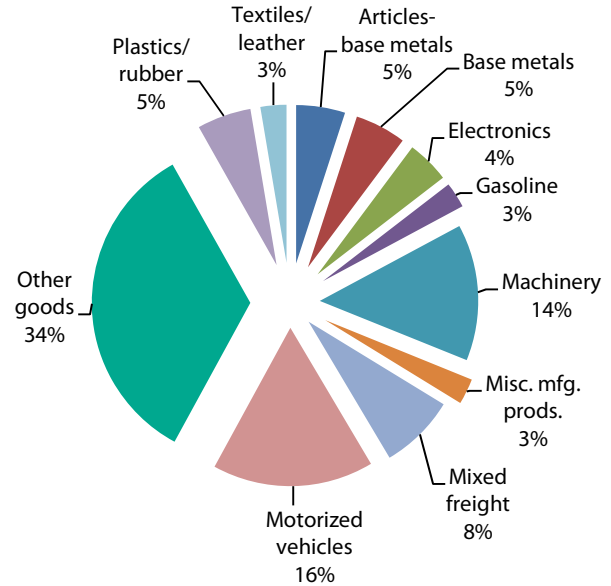


Source: American Community Survey

OHIO TRANSPORTATION FACTS—FREIGHT SHIPMENTS

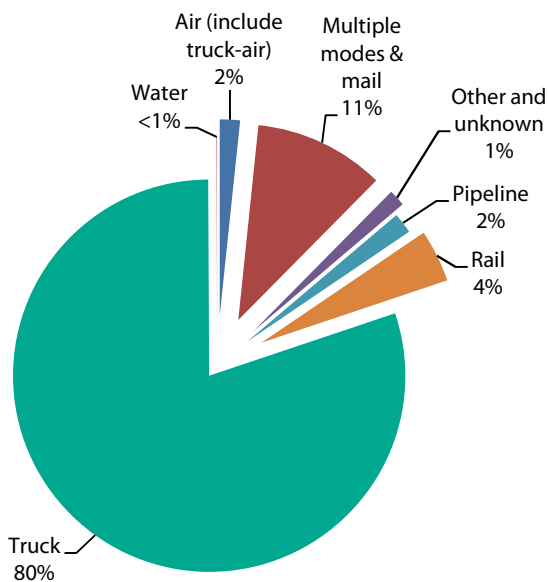
- Nearly all freight shipments by Ohio businesses – 80 percent – are carried to their destination via truck.
- The Interstate and NHS are very important to Ohio commerce – of all the truck shipments going out of state, the final destination for 59 percent of those goods is a non-neighboring state.
- Over 40 percent of truck travel miles in the U.S. are on the Interstate system.
- Truck shipments in Ohio are expected to reach \$1.3 trillion by 2040.

Value of truck shipments by Ohio businesses in 2015, by type of product



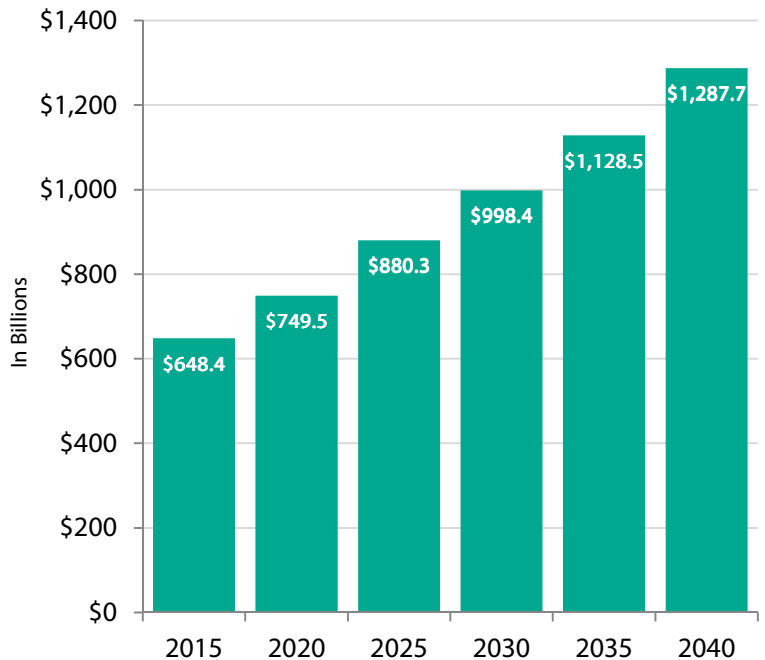
Source: U.S. Department of Transportation Freight Analysis Framework

Value of freight shipments by Ohio businesses in 2015, by mode



Source: U.S. Department of Transportation Freight Analysis Framework

The value of Ohio truck shipments

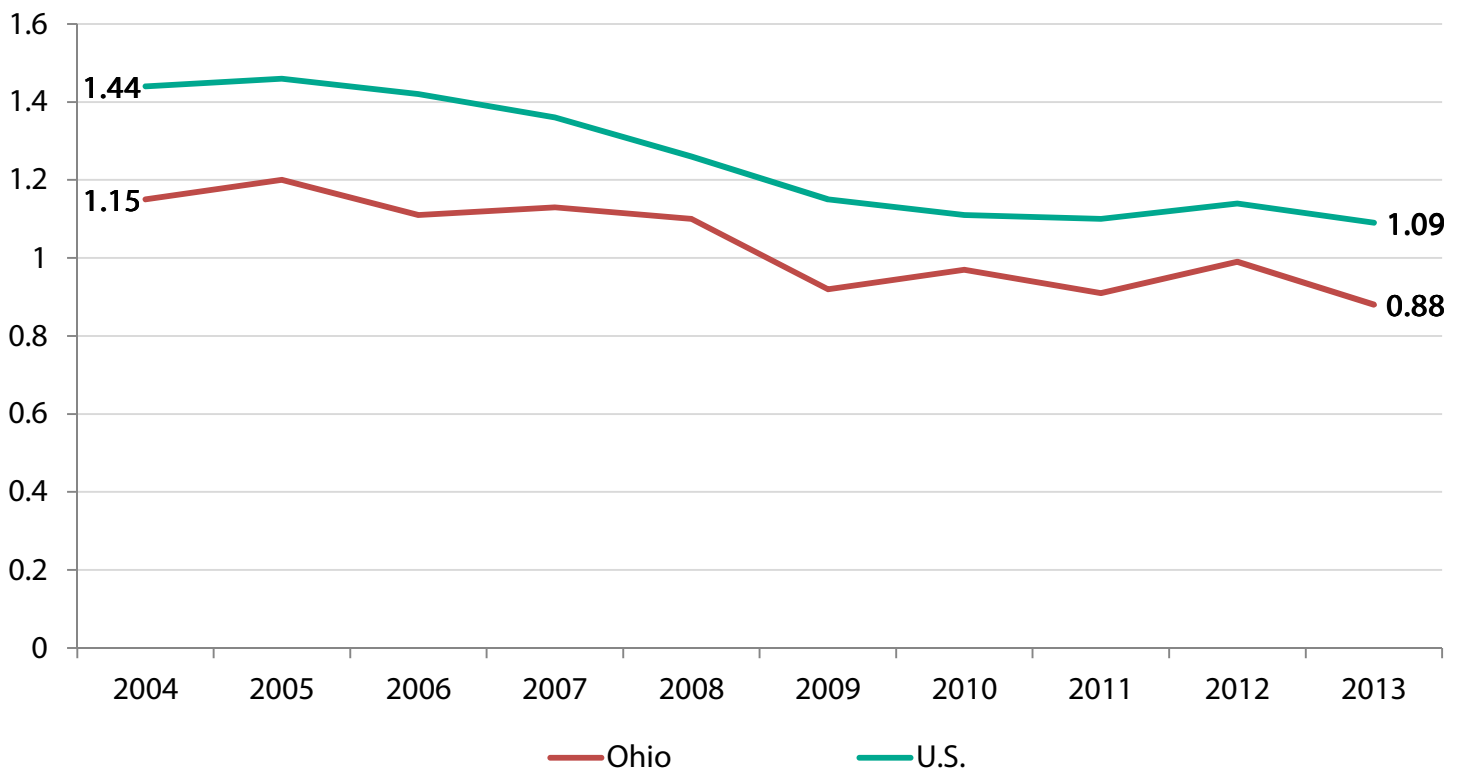


Source: U.S. Department of Transportation Freight Analysis Framework

OHIO TRANSPORTATION FACTS—SAFETY

- There were 917 fatal motor vehicle crashes, resulting in 989 deaths in Ohio during 2013. Motor vehicle crashes are the number one cause of death and also permanently disabling injuries for young Americans under age 21.
- Of these, 52 percent of fatalities occurred on rural roads and 28 percent occurred on the National Highway System.
- There were 29 aviation incidents being investigated by the National Transportation Safety Board that occurred in Ohio in 2014, with 14 reported fatalities.
- There were 302 rail accidents or incidents in Ohio in 2014, with 17 fatalities and 172 injuries, according to the U.S. Department of Transportation.
- There were 346 transit incidents in 2014 that resulted in 462 injuries and 5 fatalities.

Highway fatality rate per 100 million vehicle miles traveled



Source: NHTSA