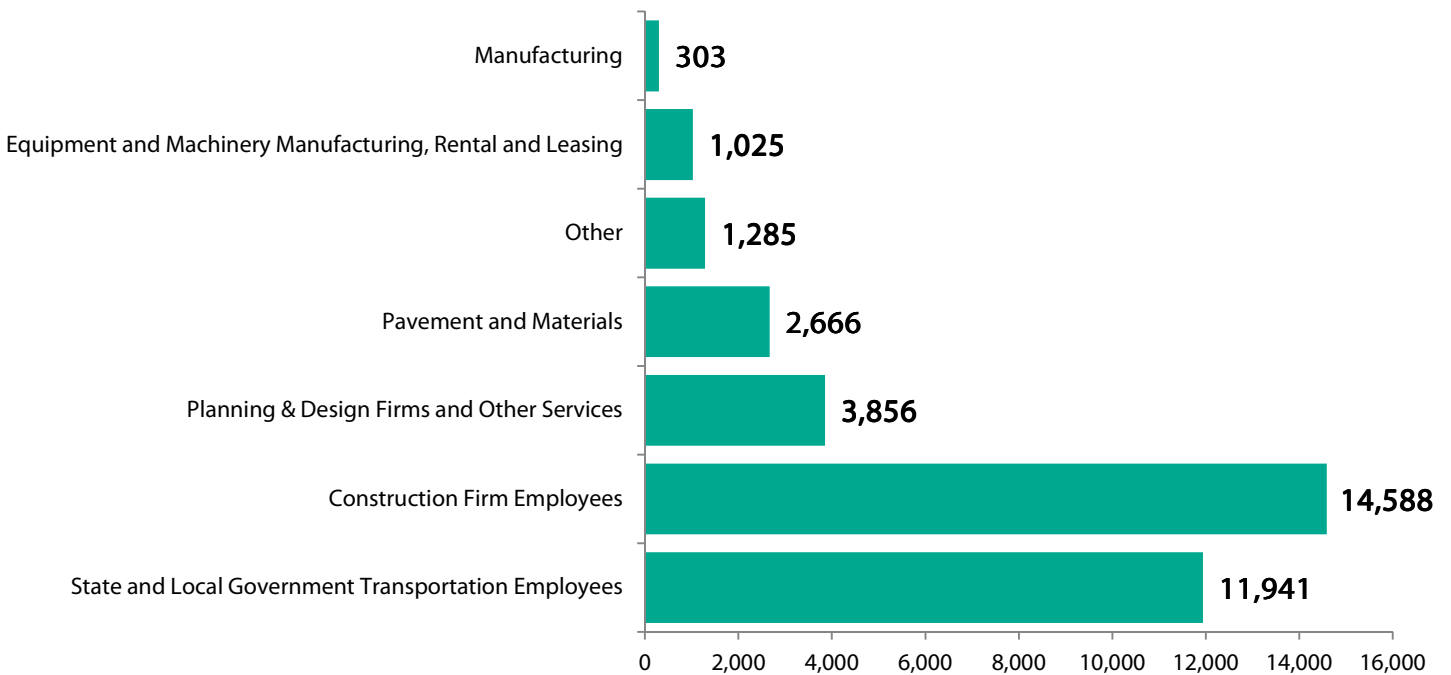


# TENNESSEE TRANSPORTATION FACTS—ECONOMIC IMPACTS

- The design, construction and maintenance of transportation infrastructure in Tennessee supports the equivalent of 71,589 full-time jobs across all sectors of the state economy. These workers earn \$2.6 billion annually.
- This includes the equivalent of 35,663 full-time jobs directly involved in transportation infrastructure construction and related activities. Spending by employees and companies in the transportation design and construction industry support an additional 35,926 full-time jobs.
- Transportation construction contributes an estimated \$468.3 million in state and local income, corporate and unemployment insurance taxes and the federal payroll tax.
- 1,355,812 full-time jobs in Tennessee in key industries like tourism, retail sales, agriculture and manufacturing are completely dependent on the state’s transportation infrastructure network. These workers earn \$51.2 billion in wages and contribute an estimated \$9.3 billion in state and local income, corporate and unemployment insurance taxes and the federal payroll tax.

**Tennessee Direct Employment Supported by Transportation Construction Market Activity, by Industry**



## TENNESSEE TRANSPORTATION FACTS—SCOPE & CONDITION

The Tennessee transportation network includes highways, local roads and streets, bridges, airports, transit and rail, freight railroad and ports and waterways. Together, these facilities move Tennessee travelers, businesses and freight and drive economic growth.

- Tennessee has 95,536 miles of roadway.
- Of the state's 17,924 miles of roadway eligible for federal aid, 4.1 percent are rated “not acceptable” and need major repairs or replacement.
- Tennessee has 20,077 bridges. FHWA reports 20 percent of the state’s bridges are either “structurally deficient” (1,083 bridges) or “functionally obsolete” (2,863 bridges).
- It will cost an estimated \$9.6 billion to make needed bridge repairs on 7,358 structures in the state.
- There are 17 transit agencies based in the state that serve Tennessee travelers.
- There are 25 freight railroads operating 2,651 miles of track.
- Tennessee has 208 commercial and general aviation facilities with 369 runways. A total of 79 percent of the runways that are rated are classified in good or excellent condition.
- Waterway facilities in Tennessee include 9 locks and dams and 233 port docks, among other facilities. Tennessee has 950 miles of inland waterways and ships 34.1 million tons of freight.

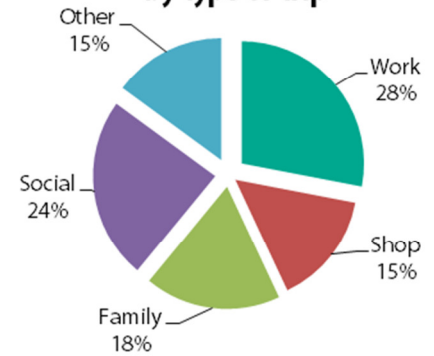
Transportation Network Profile	
Highways, Roads & Bridges	
Total Road Mileage	95,536
Rural Mileage	70,015
Urban Mileage	25,521
Number of Bridges	20,077
Airports	
Number of Airports	208
Transit & Rail	
Bus Route Miles	2,836
Transit Rail Route Miles	73
Number of Transit Agencies	17
Freight Railroad	
Railroad Miles	2,651
Number of Railroads	25
Ports & Waterways	
Miles of inland waterways	950
Total Shipments (1,000 tons)	34,076
Domestic Shipments	32,420
Foreign Shipments	0
Intrastate Shipments	1,656
Number of waterway facilities	303

# TENNESSEE TRANSPORTATION FACTS—MOBILITY

A strong transportation network is crucial for facilitating economic and recreational activity across Tennessee. The businesses and workers in Tennessee rely on the state’s transportation network to arrive at their offices, sales visits and job sites safely each and every day.

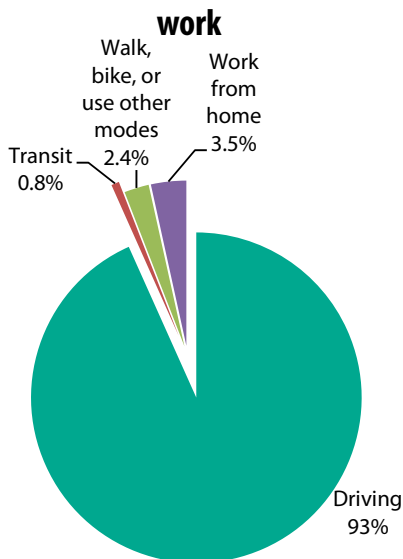
- Tennessee drivers traveled 71 billion vehicle miles in 2013, with the average driver traveling 15,432 miles, compared to a national average of 14,085 miles.
- Most travel, 28 percent of all miles, was for commuting and work-related purposes.
- In Tennessee, 93 percent of commuters get to work by driving, 0.8 percent take transit, 2.4 percent walk, bike or use other modes and 3.5 percent work from home.
- The average commute time is 23 minutes one way.
- The state’s transportation network allows Tennessee citizens to make choices about where they work and live—72 percent of residents work and live in the same county (commuting an average of 18 minutes one way), 24 percent commute to a different county to work (37 minute average commute), and 4.0 percent work in a different state (39 minute average commute).
- Over the last five years, an average of 974,678 people have moved either within or to Tennessee each year, with 61 percent relocating within the county where they were living before, 19 percent moving from a different Tennessee county, 18 percent coming from out of state and 2.2 percent coming from abroad.

**Miles traveled by U.S. drivers, by type of trip**



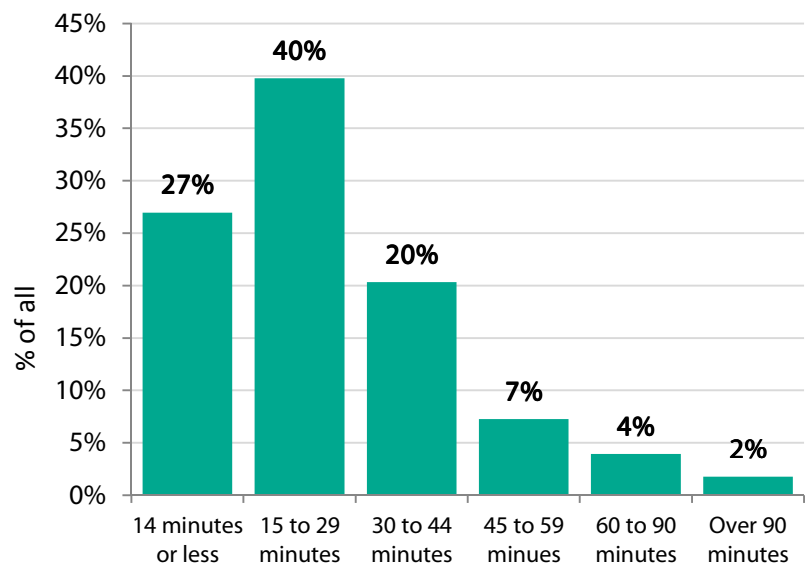
Source: National Personal Transportation Survey

**How Tennessee drivers get to work**



Source: American Community Survey

**Tennessee daily one-way commuting times**

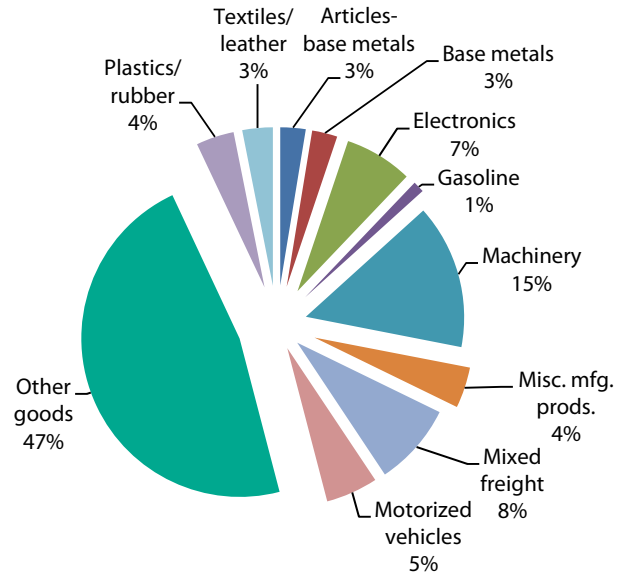


Source: American Community Survey

# TENNESSEE TRANSPORTATION FACTS—FREIGHT SHIPMENTS

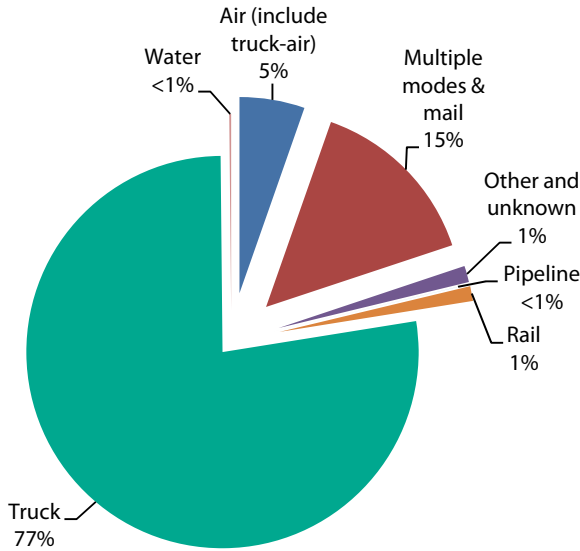
- Nearly all freight shipments by Tennessee businesses – 77 percent – are carried to their destination via truck.
- The Interstate and NHS are very important to Tennessee commerce – of all the truck shipments going out of state, the final destination for 63 percent of those goods is a non-neighboring state.
- Over 40 percent of truck travel miles in the U.S. are on the Interstate system.
- Truck shipments in Tennessee are expected to reach \$871.0 billion by 2040.

**Value of truck shipments by Tennessee businesses in 2015, by type of product**



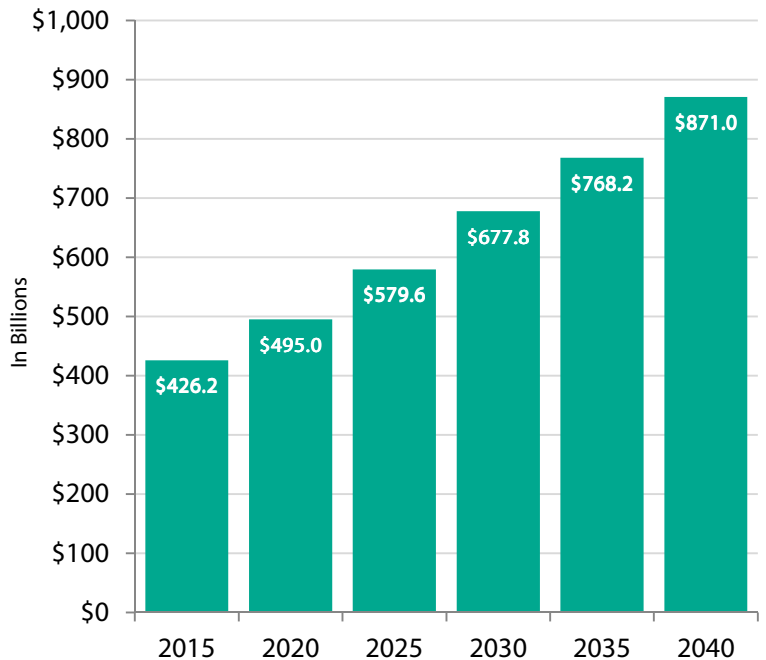
Source: U.S. Department of Transportation Freight Analysis Framework

**Value of freight shipments by Tennessee businesses in 2015, by mode**



Source: U.S. Department of Transportation Freight Analysis Framework

**The value of Tennessee truck shipments**

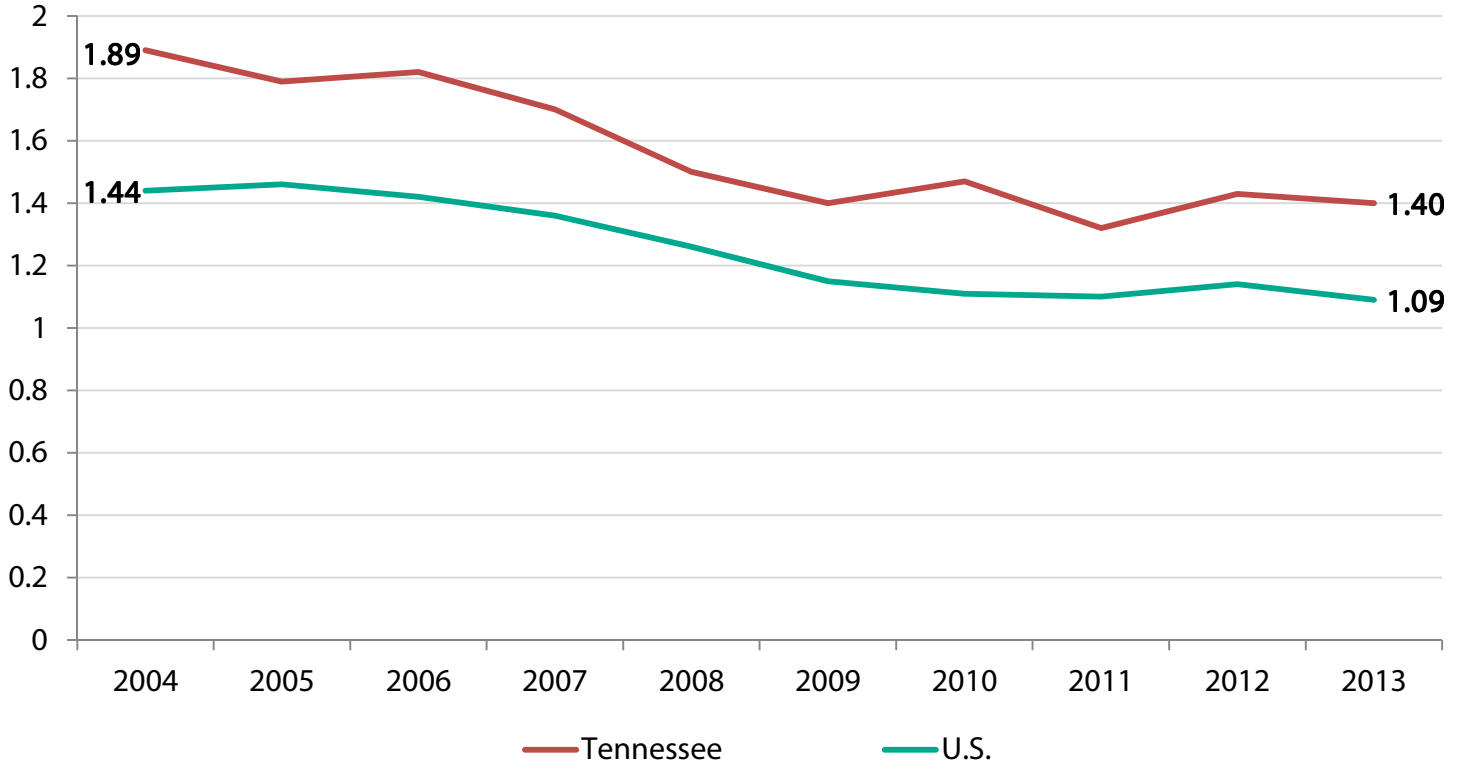


Source: U.S. Department of Transportation Freight Analysis Framework

## TENNESSEE TRANSPORTATION FACTS—SAFETY

- There were 911 fatal motor vehicle crashes, resulting in 995 deaths in Tennessee during 2013. Motor vehicle crashes are the number one cause of death and also permanently disabling injuries for young Americans under age 21.
- Of these, 53 percent of fatalities occurred on rural roads and 41 percent occurred on the National Highway System.
- There were 24 aviation incidents being investigated by the National Transportation Safety Board that occurred in Tennessee in 2014, with 10 reported fatalities.
- There were 182 rail accidents or incidents in Tennessee in 2014, with 20 fatalities and 98 injuries, according to the U.S. Department of Transportation.
- There were 70 transit incidents in 2014 that resulted in 87 injuries and 1 fatality.

**Highway fatality rate per 100 million vehicle miles traveled**



Source: NHTSA